



Portland Court, Hendon Lane, Finchley, N3

£1,195,000 Share of Freehold



800 finchley road, hampstead garden suburb, london, nw11 7tj

telephone 020 8458 5000 facsimile 020 8209 2068

email sales@litchfields.com web litchfields.com

offices also in crouch end & highgate

A superb first floor 2/3 bedroom apartment in arguably the road's finest purpose built block which was built approximately 21 years ago. This spacious and bright flat is quietly positioned at the rear of the property overlooking stunning beautiful landscaped communal gardens. The apartment is one of the larger types in the block offering approximately 1400 square feet of space and benefitting from two underground parking spaces. Portland Court is undoubtedly one of the most sought after developments in the area, due to its communal gardens which feature a swimming pool and the attendance of a porter 5 days a week. Viewing of this chain free home is strongly advised.



Two Bedrooms (Originally Three)

Two bathrooms (1 en suite)

Bed Three/Dining Room

Dressing Room

Drawing Room

Kitchen/breakfast Room

Large entrance hall

Balcony

Underground parking for two cars

Stunning communal gardens with heated swimming pool

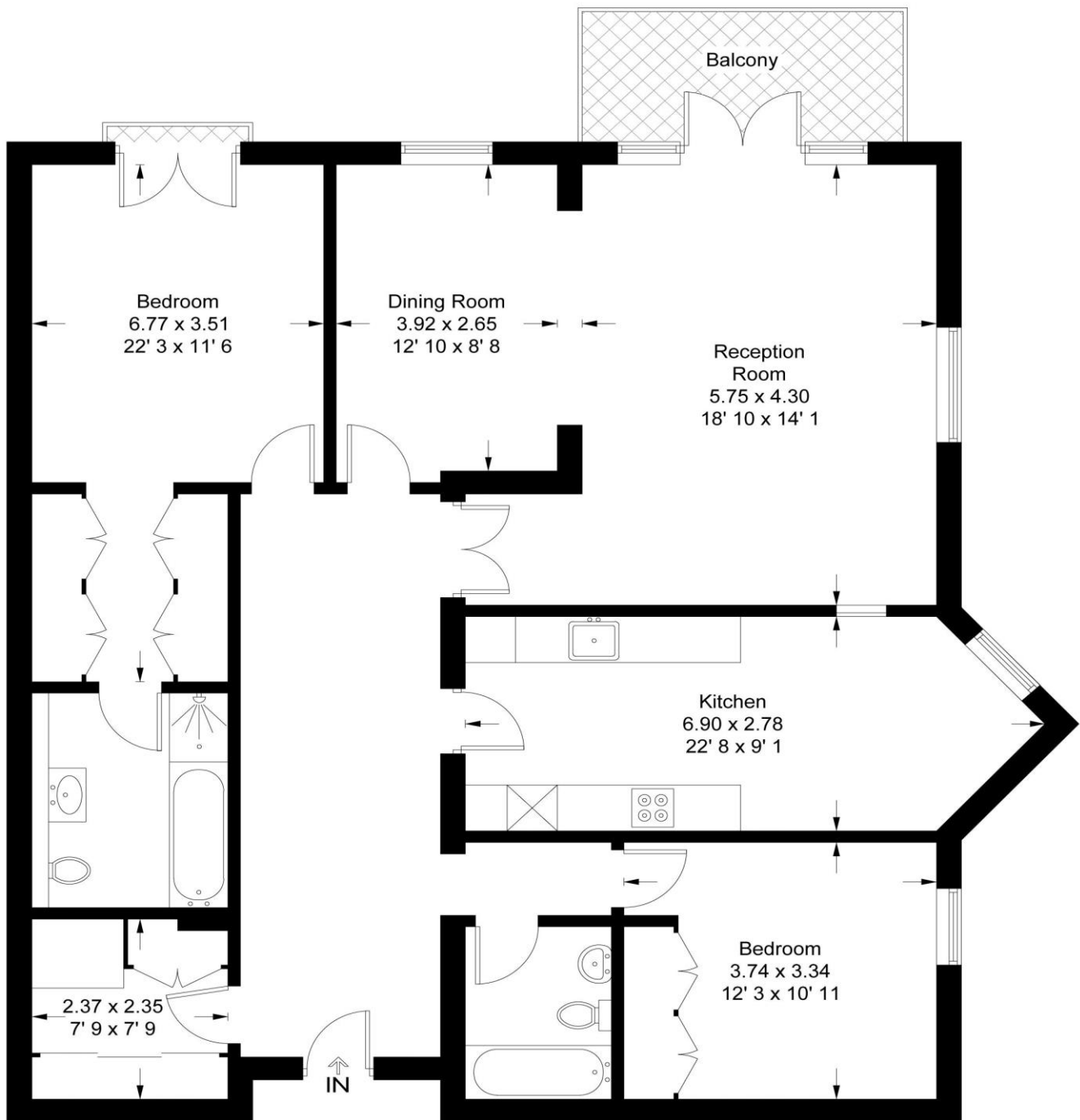
Storage cupboard

EPC= C



Portland Court

Approximate Gross Internal Area = 1434 sq ft / 133.2 sq m



First Floor

This plan is not to scale and must be used as layout guidance only. All measurements and areas are approximate and should not be relied upon to provide accurate information. This plan must not be relied upon when making property valuations, design considerations or any other such relevant decisions. We accept no responsibility or liability (whether in contract, tort or otherwise) in relation to any loss whatsoever arising from or in connection with any use of this plan or the adequacy, accuracy or completeness of it or any information within it.